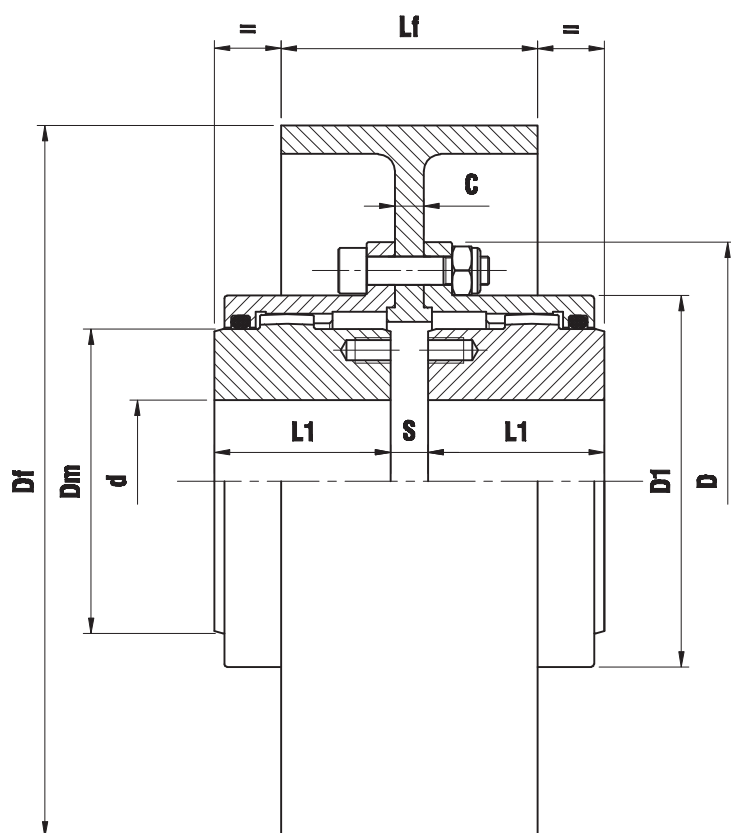


## ZFF series

Two oscillating hubs and brake band



BRAKE BAND TYPE DIN 15431			Max Speed (rpm)	"Z" COUPLING TYPE					
Df	Lf	C							
200	75	8	4770	110	142	168			
250	95	10	3820	110	142	168	200		
315	118	12	3030	142	168	200	225		
400	150	14	2380	200	225	265	300	330	
500	190	18	1820	265	300	330	370	405	440
630	236	22	1510	300	330	370	405	440	500
710	265	22	1340	370	405	440	500		

TYPE	TECHNICAL DATA			d max.	D	D1	Dm	L1	s	Maximum Parallel Misalignment (mm)
	$\frac{N}{n} = \frac{\text{kW}}{\text{rpm}}$	Torque (kNm)								
		Nominal	Peak							
ZDF - 110	0,19	1,82	4	50	110	83	69	43	3 + C	0,15
ZDF - 142	0,30	2,85	6,27	60	142	105	85	50	3 + C	0,20
ZDF - 168	0,59	5,6	12,32	75	168	131	107	62	3 + C	0,25
ZDF - 200	0,93	8,8	19,36	95	200	159	133	76	5 + C	0,30
ZDF - 225	1,50	14,3	31,46	110	225	184	152	90	5 + C	0,40
ZDF - 265	2,41	23	50,6	130	265	212	178	105	6 + C	0,45
ZDF - 300	3,67	35	77	150	300	246	209	120	6 + C	0,50
ZDF - 330	4,64	44,3	97,46	170	330	275	234	135	8 + C	0,55
ZDF - 370	7,33	70	154	190	370	307	254	150	8 + C	0,60
ZDF - 405	8,80	84	184,8	210	405	335	279	175	8 + C	0,70
ZDF - 440	15,95	152,3	335	230	440	367	305	190	8 + C	0,80
ZDF - 500	21,34	203,8	448,3	280	500	423	355	220	10 + C	1,00

Specify the dimension Df when making the request.

On request we can supply hardened brake band.

We can supply brake band with different dimensions.

On request we can supply couplings in ZCA version