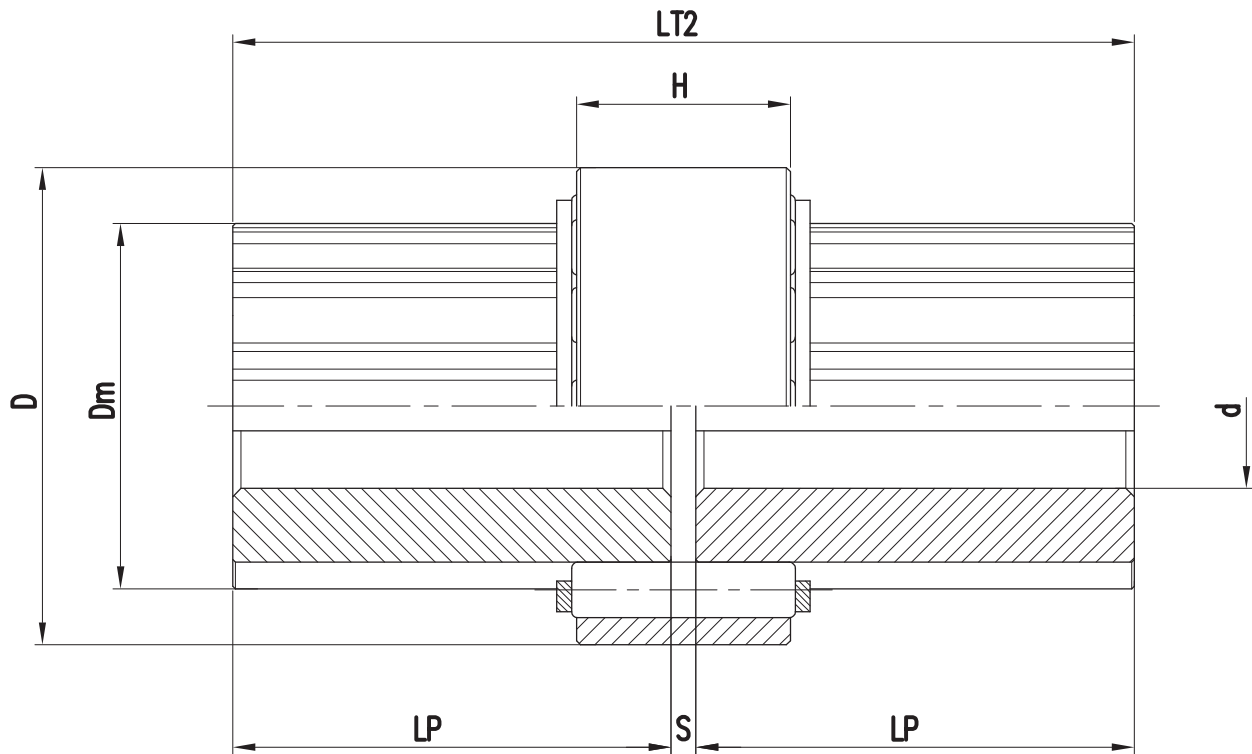


Elastic couplings in aluminum

REVOLUTION TYPE **RE2P** series, version with two extended hubs

**MAINTENANCE
WITHOUT MOVING
CONNECTED MACHINES**



TYPE RE2P	TECHNICAL DATA				DIMENSIONS (mm)								No. elastic elements	WEIGHT (Kg)	MISALIGNMENT (±)	
	$\frac{N}{n} = \frac{KW}{rpm}$	Mt (Nm)	Max speed (rpm)	PD ² (kgm ²)	d min	d max	D	Dm	LP	LT2	s	H			axial (mm)	angular (°)
58	0,012	110	16470	0,00049	11	25	58	44	50	103	3	26	12	0,45	1	4°
67	0,019	180	14260	0,0011	13	30	67	51	60	124	4	35	12	0,67	1,2	
86	0,045	430	11100	0,0043	21	42	86	67	80	164	4	47	12	1,5	1,5	
104	0,089	850	9180	0,014	26	50	104	81	110	224	4	55	15	2,82	2	
129	0,173	1650	7400	0,0448	36	65	129	104	140	285	5	65	15	6,18	2,5	

The Weight and the PD² are calculated considering coupling with pilot bores.
 For the machining of the finished bores it is necessary to specify diameters and keyways with tolerances.
 On request is possible to have one or both hubs with different lengths.