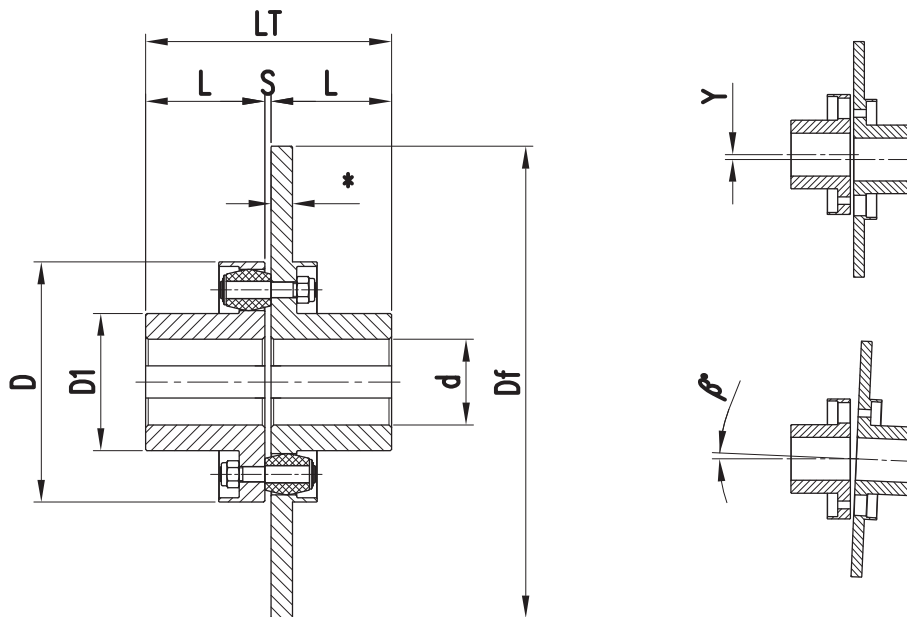


Elastic couplings with pins

PNDF series, version with brake disk



* THICKNESS ON REQUEST

TYPE PNDF	TECHNICAL DATA			DIMENSIONS (mm)							No. Pins	MISALIGNMENT (±)				
	$\frac{N}{n} = \frac{\text{kW}}{\text{rpm}}$	Mt (Nm)	Max speed (rpm)	d max	D	D1	L	Df	$S \pm \frac{2}{0}$	LT		y(mm)	β(°)			
112D250X *	0,0492	470	3840	40	112	62	55	250	3	113	12	0,2	1°			
125D250X *	0,0848	810		45	125	65	60				300			6	126	12
140D250X *	0,116	1110		55	140	80	70								146	14
160D300X *	0,147	1400	3180	60	160	85	80	356	6	166	12					
180D300X *	0,198	1890		70	180	104	90			186	14					
180D356X *			2680	75	200	106	100	406	6	206	12					
200D356X *	2350	90								225	128	110		457	10	226
200D406X *			2090	95	250	130	120	514	10							250
225D406X *	0,304	2900								1850	115	280		158	130	610
225D457X *			0,503	4800	1560	125	320	172	140		711	14		290	12	
250D457X *	0,681	6500				1340	150	360	210	160				812	14	330
280D514X *			0,959	9160	1170		160	400	224	180	915	14				374
320D514X *	1,298	12400				1040	190	450	265	200				14	14	414
320D610X *			1,466	14000	1170		200	500	280	220	14	16				454
360D610X *	1,999	19000				1040	210	560	295	240				14	12	494
400D711X *			2,617	25000	1040		250	630	360	260	14	14	534			14
450D711X *	5,424	51800				1040	210	560	295	240			14	12	494	12
501D812X *			7,330	70000	1040		250	630	360	260	14	14			534	14
560D812X *	7,330	70000				1040	250	630	360	260			14	14	534	14
560D915X *			7,330	70000	1040		250	630	360	260	14	14			534	14
630D915X *	7,330	70000				1040	250	630	360	260			14	14	534	14

The Weight and the PD² will be calculated on request.

For the machining of the finished bores it is necessary to specify diameters and keyways with tolerances.

On request the brake disk are worked with different diameter and position.

You can also have oversized hubs (see **PNM** series), for high transmission (see **PNHP** series), or with oversized hubs and high transmission (see **PNMHP** series).

On request can be made couplings larger sizes.

On request is possible to have one or both hubs with different lengths.