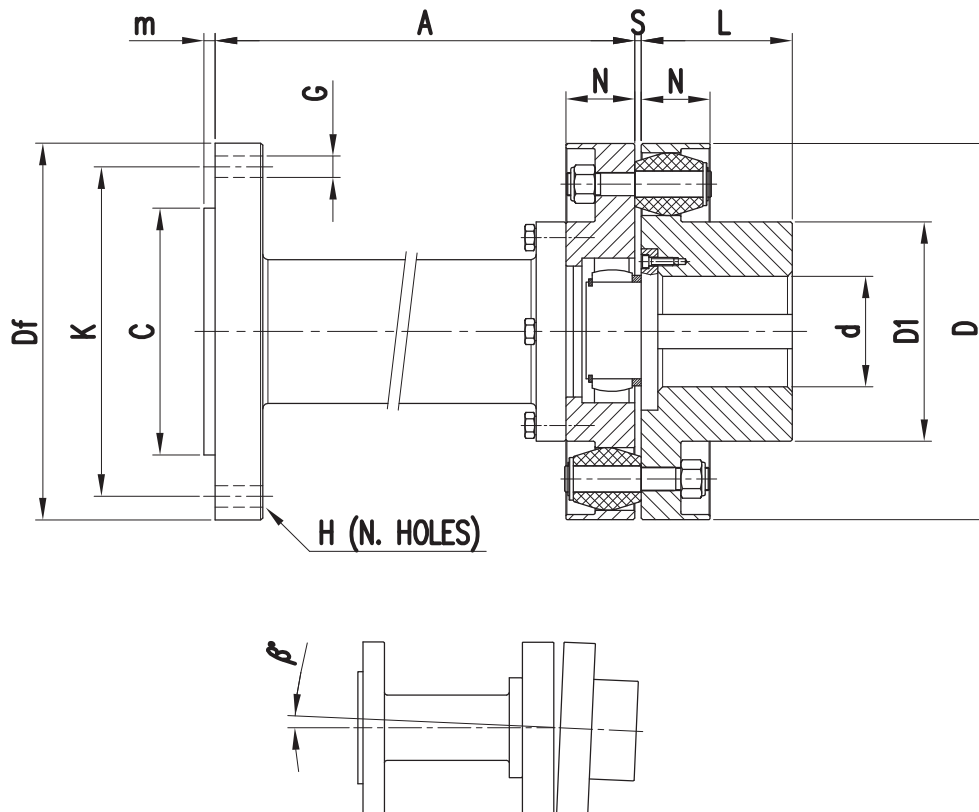


Elastic couplings with pins

PNAFLS series, version with supported spacer and flange connection



| TYPE PNAFLS | TECHNICAL DATA | | | DIMENSIONS (mm) | | | | | | No. Pins | MISALIGNMENT (±) |
|----------------|--|------------|--------------------|-----------------|-----|-----|-----|----|---------------------|-------------|------------------|
| | $\frac{N}{n} = \frac{\text{kW}}{\text{rpm}}$ | Mt (Nm) | Max speed (rpm) | d max | D | D1 | L | N | $S \pm \frac{2}{0}$ | | B(°) |
| 112 | 0,0492 | 470 | 8500 | 40 | 112 | 62 | 55 | 28 | 3 | 12 | 1° |
| 125 | 0,0848 | 810 | 7680 | 45 | 125 | 65 | 60 | 28 | 6 | 12 | |
| 140 | 0,116 | 1110 | 6800 | 55 | 140 | 80 | 70 | 36 | | 14 | |
| 160 | 0,147 | 1400 | 6000 | 60 | 160 | 85 | 80 | | | 12 | |
| 180 | 0,198 | 1890 | 5300 | 70 | 180 | 104 | 90 | 14 | | | |
| 200 | 0,226 | 2160 | 4800 | 75 | 200 | 106 | 100 | 12 | | | |
| 225 | 0,304 | 2900 | 4260 | 90 | 225 | 128 | 110 | 14 | | | |
| 250 | 0,503 | 4800 | 3840 | 95 | 250 | 130 | 120 | 10 | 12 | | |
| 280 | 0,681 | 6500 | 3400 | 115 | 280 | 158 | 130 | | 14 | | |
| 320 | 0,959 | 9160 | 3000 | 125 | 320 | 172 | 140 | | 12 | | |
| 360 | 1,298 | 12400 | 2700 | 150 | 360 | 210 | 160 | | 14 | | |
| 400 | 1,466 | 14000 | 2400 | 160 | 400 | 224 | 180 | 14 | 12 | | |
| 450 | 1,999 | 19000 | 2160 | 190 | 450 | 265 | 200 | | 14 | | |
| 501 | 2,617 | 25000 | 1920 | 200 | 500 | 280 | 220 | | 16 | | |

Dimensions Df, K, C, G, H (n. holes) and the length A are to be specified with the request.

For the machining of the finished bores it is necessary to specify diameters and tolerances.

You can also have oversized hubs (see **PNM** series), for high transmission (see **PNHP** series), or with oversized hubs and high transmission (see **PNMHP** series).

On request can be made couplings larger sizes.

On request is possible to have one or both hubs with different lengths.